

# PRODUCT CATALOGUE

INFRARED PANELS

[www.yandiyatechnologies.com](http://www.yandiyatechnologies.com) Tel: +44 (0)1329 556575

# CONTENT.

- 3. About us
- 4. Benefits of Infrared
- 6. Designer Glass Infrared Panels.
- 7. Satin Finished Frameless Panels.
- 8. Titan Infrared Mirror Panels.
- 9. I-Care Low Surface Temperature Panels.
- 10. H-Care Antimicrobial Infrared Panels.
- 11. Luxury Curved Portable Infrared Panel.
- 12. Mini Infrared Heater Panel.
- 13. Blade Infrared Outdoor Heater.
- 14. Zero Infrared Outdoor Heater.
- 15. Ruby Infrared outdoor Heater.
- 16. Infrared Towel Rails.
- 17. Infrared Hand Dryers.
- 18. Control Systems..
- 19. Commercial info



# ABOUT US.

Yandiya is a worldwide leader in manufacturing high performance infrared radiant heating panels conforming to all the Eco standard and certification for ErP compliant heating for both residential and commercial buildings. We are dedicated to making high-quality, eco-friendly, affordable, energy-efficient heating available to homeowners, businesses, and distribution, helping others to lower their heating costs and energy consumption, while providing the highest level of comfortable heating.

Our Shenzhen Yandiya Technology Limited infrared radiant heating panels are available for purchase from any of Yandiya's network of dealers and distributors throughout the world. With new companies coming on board.

Founded in 2010, Shenzhen Yandiya Technology, located in Shenzhen, Baoan China, and has shipped thousands of its panels to hundreds of customers throughout the world.



Yandiya Far Infrared Heating system represents the future of heating, both for domestic and commercial applications.

## VISION

“Yandiya’s commitment is to actively contribute to sustainable development through environmental protection, social responsibility and economic progress. To us, that means meeting the needs of society today, while respecting the ability of future generations to meet their needs Yandiya Limited takes pride in offering the best customer service to achieve the goal of 100% customer satisfaction.”

**7yrs**

proven track-record of producing energy-efficient, eco-friendly panels.

**36,000M<sup>2</sup>.**

Manufacturing Plant based in Shenzhen PRC

**18,000ft<sup>2</sup>.**

Warehousing in Europe and Central United Kingdom.

**7,000ft<sup>2</sup>.**

Sales and Marketing Corporate Offices United Kingdom.





600watt White Glass  
Infrared Heating panel.



Lower energy  
consumption  
reduces your  
household's  
carbon footprint



Reduces heating bills  
by up to 60%



Completely natural and  
safe form of heat – the  
same as the sun!



The materials used in  
our  
Infrared Panels are  
100%  
recyclable



## Infrared heating | warms objects



Our infrared panels emit radiant heat, and the infrared energy will be stored in the walls, ceilings and floors of your home. Each room is therefore heated by the energy emitted from these objects.

This results in a much more evenly heated space, with no heat circulation and a more comfortable living space.

## Convection heating | warms air



Convection heat is constantly at odds with the air in a room and the best way to address this is by keeping the doors closed and having triple-glazing windows and insulated walls in your home.

This method of heating relies on the circulation of warm air around a room, varying the temperature by as much as 5°C as the warmer air rises as a characteristic.

## WHAT IS INFRARED HEATING AND HOW DOES IT WORK?

Think of the sun! 53% of the energy from the sun is harmless infrared, heating not the air but objects and the earth's

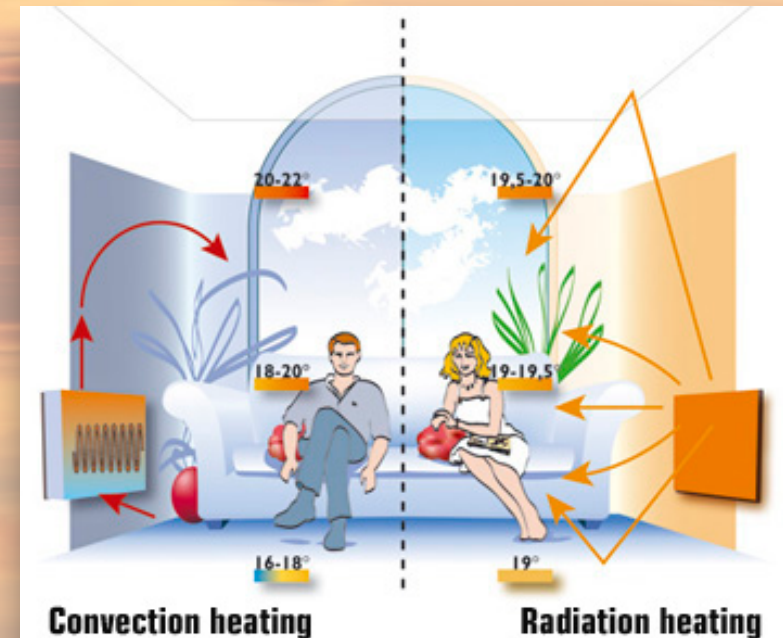
Now think of your own home where our revolutionary heater panels produce infrared; heating the objects in your home e.g. carpets, ceilings, furniture and storing this energy. Like a radiator this energy is released to heat your home.

Different from traditional conventional heating it does not cause constant air circulation; creating an evenly heated space and a more comfortable space.



Operated on thermostats the Yandiya Infrared Heating systems monitors the heat levels; turning the system on and off with a small amount of energy needed to keep the home at your desired comfortable levels, saving on power bills.

A Yandiya Infrared heating system will create a drier warmer healthier home.



# WHY CHOOSE YANDIYA INFRARED

## What is Lot 20?

Never heard of Lot 20? You're not alone – it's a piece of legislation that's been flying under the radar of interest for most of the population, outside of anyone directly involved with the heating industry. To get a better understanding of what Lot 20 is, you first need to understand the main directive it comes from: the European Ecodesign Directive (2009/125/EC).

## The Ecodesign Directive

This directive was created so that energy-using products would have a framework of basic requirements to make them as efficient and environmentally friendly as possible, and when you consider the amount of energy we use on a daily basis, it's clear why this legislation is so important.

The EU commission has recognised for a number of years that local space heating represents a high proportion of energy usage and therefore is a key area for carbon emission reductions.

The new legislation is designed to reduce energy consumption. For electric space heaters, this will be achieved by only permitting their use when operated by advanced controls and App controlled heating smart controls, improving their effective use and minimising wasted energy.

## Energy savings

The Yandiya Infrared heating system and smart control that is supplied from the factory and distributed via our partners and which are governed by Lot 20 regulations will be supplied with TQ13 and TQ19 system controls that guarantee compliance with energy savings while ensuring no compromise on the style and mounting options of the panels. The TQ13 and TQ19 system features electronic room temperature control with daily and weekly timer, energy monitoring control and data recording and adaptive start functions. The combination of far infrared heaters with an external control system not only ensures compliance but also easy installation, while being user friendly and cost-effective. Far Infrared heaters are more energy efficient as they heat the thermal mass of properties, not the air.



The **minimum** seasonal energy efficiency ratio value that an electric heating system **must reach is 38%**. The first factor is based on the type of temperature control that the product employs. Products with a simple control or without a control receive a value of 0%. Products using smart temperature control and weekly and daily timer, such as the TQ13 and TQ19, get a value increase of 7%.

The **second factor** is based on the benefits derived from special functions that specifically improve energy efficiency. Yandiya's next generation TQ13 and TQ19 smart controls incorporate interior temperature control software. They also include internal modem for Wi-Fi and an adaptable start-up control, all of which adds a further 2% to the initial 30% value that all electric heaters have.

The third and final factor that affects the seasonal energy efficiency ratio is the product energy consumption while in standby mode. Yandiya's infrared heating panels and TQ range next have a standby consumption below the required limit, thus complying with the Lot20 regulations and improving the product's efficiency.

In summary, in accordance with aforementioned data, **Yandiya Infrared heaters** would obtain a **seasonal energy efficiency ratio value of 39%** – well above the minimum required by Lot20 regulations.





## DESIGNER IR GLASS PANELS RANGE

Surface Material	Tempered Glass
Colours	White & Black
Surface Temperature	90°C
Voltage	210-230VAC
Cable	2meter
Installation	Wall/Ceiling
Warranty	5 Years

colour options



Designer range of glass infrared heating panels are stylish and cost-effective, our Glass Infrared Panel Heaters will add an air of elegance and sophistication to any type of room be it a bedroom, office or living space.

Available in black or white glass, they measure 550 x 600 - 550 x 1100 and 300 x 1800 generate a healthy comfortable heating environment.

Frameless and minimalistic, they'll be perfect for any modern environment, looking for all the world like a sheet of black or white glass affixed discreetly to a wall or a ceiling.

With a IP65 rating these glass panels are ideal for making bathrooms and kitchens have a modern look and fit with your décor.

Sizes	Rated Power	Amps	Coverage
550*600	450Watt	1.95	6.61-7.50M <sup>sq</sup>
300*1800	600Watt	2.60	8.14-8.82M <sup>sq</sup>
600*1100	900Watt	3.91	11.94-13.23M <sup>sq</sup>



## ALUMINIUM IR PANELS RANGE

Aluminium powered coated satin finish surface of our Frameless IR Panels, with an even heat desparation across the surface making it the highest performance IR heater available.

Insulated with an internal 13mm pad, making sure a 98% generation of heat with no loss thru the back.

The four sizes incorporate the discreet sizes of 595 x 595 and the 595 x 1195 can be wall mounted or placed into a suspended ceiling grid in place of the white ceiling tiles, thereby heating the room from above.

As with all of our IR Panel Heaters, the Frameless IR Panels are supplied with all the fixing materials necessary

Surface Material	Aluminium
Colours	White & Black
Surface Temperature	90°C
Voltage	210-230VAC
Cable	2meter
Installation	Wall/Ceiling
Warranty	5 Years



Sizes	Rated Power	Amps	Coverage
596*595	350Watt	1.52	5.14-6.61M <sup>sq</sup>
595*795	500Watt	2.17	7.35-8.33M <sup>sq</sup>
595*1195	800Watt	3.47	11.76-13.33M <sup>sq</sup>
795*1195	1200Watt	5.21	17.64-21.24M <sup>sq</sup>







Our stylish frameless Mirrored Infrared Heaters are perfect for any room, thanks to their unique anti-misting properties and IP65 rating and polished edges to stop any rusting of the mirror. Using the latest technology in manufacturing of glass mirror our innovative frameless infrared mirror, are available in three designs that will look equally amazing either in a bathroom or bedroom on the wall. The circular model has a diameter of 900mm and will look equally as well in any room in the house.

## TITAN IR MIRROR PANELS RANGE



Surface Material	Tempered Glass Mirror
Colours	Silver
Surface Temperature	90°C
Voltage	210-230VAC
Cable	2meter
Installation	Wall/Ceiling
Warranty	5 Years
Optional	LED Back Light

Sizes	Rated Power	Amps	Coverage
600*700	350Watt	1.95	5.14-6.61M <sup>sq</sup>
600*1000	500Watt	2.60	7.35-8.33M <sup>sq</sup>
900 Round	500Watt	3.91	7.35-8.33M <sup>sq</sup>



## ALUMINIUM IR Icare PANELS RANGE

Aluminium Icare low surface temperature infrared heating panels are a powered coated satin finish surface. ICare is a low surface temperature infrared heating system. Manufactured by Yandiya to exacting European standards. The Panels can be installed into walls or ceiling, providing highly efficient FAR infrared heating. The low surface temperature maximum 45°C make it compliant with standard regulation

and makes it suitable for installation in a wide range of situations

- Care homes
- Student accommodation
- Nurseries
- Bathrooms
- Living rooms

Sizes	Rated Power	Amps	Coverage
596*595	350Watt	1.52	4.12-5.14-M <sup>sq</sup>
595*795	500Watt	2.17	6.36-7.35M <sup>sq</sup>
595*1195	800Watt	3.47	11.93-13.33M <sup>sq</sup>
**600*1000	500Watt	2.17	6.36-7.35M <sup>sq</sup>

\*\* Mirror LOW surface temperature



Surface Material	Aluminium
Colours	White & Black
Surface Temperature	45°C +/-10%
Voltage	210-230VAC
Cable	2meter
Installation	Wall/Ceiling
Warranty	5 Years







Surface Material	Aluminium/Glass
Colours	Silver
Surface Temperature	90°C
Voltage	210-230VAC
Cable	2meter
Installation	Wall/Ceiling
Warranty	5 Years

## ANTIMICROBIAL IR PANELS RANGE



Our frameless aluminium or glass infrared heating panels with antimicrobial coating, this is an agent that interferes with the growth and reproduction of bacteria. Antimicrobial finishes, in particular, help prevent and restrict the spread of harmful bacteria such as E. coli, Listeria and Pseudomonas on contact surfaces. The hygiene H panels are suitable for hospital and clean rooms, where foreign bodies are disruptive to the process, using this specially treated infrared panel, reduces the present of harmful bacteria, whilst still giving the innovative and energy efficient infrared heating expected from a Yandiya panel.

Sizes	Rated Power	Amps	Coverage
595*595	350Watt	1.52	4.12-5.14-M <sup>sq</sup>
595*1195	800Watt	3.47	11.93-13.33M <sup>sq</sup>
600*1100 Glass	900Watt	3.91	11.94-13.23M <sup>sq</sup>

Glass panel are coated on back with antimicrobial powered coating.



# GET INTO THE GROOVE



## CURVED PORTABLE IR HEATER

Surface Material	Aluminium/PET
Colours	Gold
Surface Temperature	80°C
Voltage	210-230VAC
Cable	2meter
Installation	Stand Alone
Warranty	5 Years

Do you know what's terrible about regular portable heaters? They're ugly, really ugly. Usually as aesthetically pleasing as a warthog and about as stylish. Why has nothing been done about this?.

Light weight (2.13kg), petite (550 x 175mm) and with an elegant, arched design finally it's possible to have a beautiful, efficient portable electric heater. Perfect for heating conservatories, caravans, mobile homes and much more.

This is just one of the many benefits of this clever panel which include:

- No installation necessary. Ideal for those in rented properties. no need for approval from a landlord.**
- Ultra slim**
- Sleek, rounded design that would adorn any room.**
- Robust, durable frame that keeps the panel steady when it's stood freely.**
- Healthy direct heat also good for pets.**
- Uses only 0.1kw per hour**
- Reduced carbon footprint.**
- Evenly distributed heat via infrared rays. No more cold spots.**
- Unique Yandiya core/element.**

Sizes	Rated Power	Amps	Coverage
550*500*175 -RED	400Watt	1.52	4.12-5.14-M <sup>SQ</sup>
550*500*175 -BLACK	400Watt	1.52	4.12-5.14-M <sup>SQ</sup>
550*500*175 -GREEN	400Watt	1.52	4.12-5.14-M <sup>SQ</sup>





# ALUMINIUM MINI INFRARED PANELS



Designed to fit under any standard kitchen base unit, these 70W aluminium Infrared plinth heaters are a great addition to Infrared panels or underfloor heating. They can be daisy chained together for any size kitchen coming in black as a standard, hard wearing the aluminium casing protect the heater from damage.

Used as a supplement heat for airing cupboards, this healthy heat, gives a warming effect heating airing cupboard, giving fabric a soft heat to air clothes, the heater must not be covered, by is easily mounted to the inside of the cupboard They come in matt black as standard.

Surface Material	Aluminium
Colours	White & Black
Surface Temperature	90°C
Voltage	210-230VAC
Cable	2meter
Installation	Under cabinet/Ceiling
Warranty	5 Years



Sizes	Rated Power	Amps	Coverage
500*150	70Watt	0.30	1.60M <sup>sq</sup>
500*125	70Watt	0.30	1.60M <sup>sq</sup>
500*100	70Watt	0.30	1.60M <sup>sq</sup>





Corrosion resistance anodized  
**ALUMINIUM**  
Alloy casting for long life

Stainless steel  
**SUS304**  
Grill for long using

Latest  
**CARBON**  
Heating element

Up to  
**6,000 hours**  
flaring

Water proof  
**IP65**  
for outdoor or indoor

Vertical  
**0°-45°**  
Adjustable angel

Horizontal  
**±20°**  
Adjustable angel

UK mains Dimmer Controller  
**L/M/H**  
30% - 60% - 100% ratio

Only remote control model is available

## BLADE INFRARED OUTDOOR HEATER

Yandiya's Blade infrared carbon heater, with aluminium body and stainless steel Grill, is ideal for outdoor patio areas.

Aesthetically pleasing design with the added control feature of a three setting on the remote control version.

Designed and manufactured to be elegantly understated to create comfort while blending in with the environment and giving a soft glow light of 300Lumen.

IP65 protection is suitable for outdoor or indoor use.

Latest carbon infrared technology, with mid-wave radiation content, Immediate heat with no warm-up time

Weather-independent: no heat loss through air movement

Aluminum wall-mounted bracket included, adjustable angel is 45°

Economical to operate, affordable with low running costs, high heating efficiency, Zero maintenance; Silent operation, no UV, Environment friendly

Surface Material	Aluminium/Stainless
Colours	Silver
Surface Temperature	340°C
Voltage	210-230VAC
Cable	2meter
Installation	Outdoor/ Large Indoor
Warranty	2 Years



Sizes	Rated Power	Amps	Coverage
658*133*88	1800Watt	0.30	15.0M <sup>sq</sup>
653*133*88	1800Watt (remote)	0.30	15.0M <sup>sq</sup>
1400 – 1800mm	Blade Stand	N/A	N/A

ErP



RoHS







## ZERO INFRARED OUTDOOR HEATER

Surface Material	Aluminium/Stainless
Colours	Silver
Surface Temperature	340°C
Voltage	210-230VAC
Cable	2meter
Installation	Outdoor/ Large Indoor
Warranty	2 Years

Radiant heaters are often the most effective and preferred way to heat an outdoor or tough-to-heat indoor area. Unlike traditional convection heaters, electric panel wall heaters will heat people or objects, not air. In outdoor areas, hot air is blown away, while in open indoor areas, the hot air rises to the ceiling or is lost via ventilation. Radiant heat will comfortably and energy-efficiently provide direct heat to people in this situation.

Like the heat rays emitted by the sun, the ceiling or wall mounted power heaters emit radiant warmth from above. A unique infrared element and alloy heating surface produces even, radiant warmth directly to individual people and surfaces below. Unlike traditional outdoor heaters, which aim to heat the surrounding air and can result in high temperatures close to the heat source and lower temperatures further away, the radiant heat emitted by our power heaters penetrates through the air to provide a comfortable, even temperature.

High intensity electric radiant overhead heater with high surface area profiled alloy, Suitable for ceiling, wall, beam, fixed umbrella and recess mounting.



Sizes	Rated Power	Weight	Coverage
1030*160*50	1000watt	4.8kg	10.0M <sup>sq</sup>
1210*160*50	1800watt	5.4kg	20.0M <sup>sq</sup>
1490*160*50	2400watt	6.5kg	30.0M <sup>sq</sup>
1900*160*50	3200watt	8.2kg	40.0M <sup>sq</sup>

ErP



RoHS



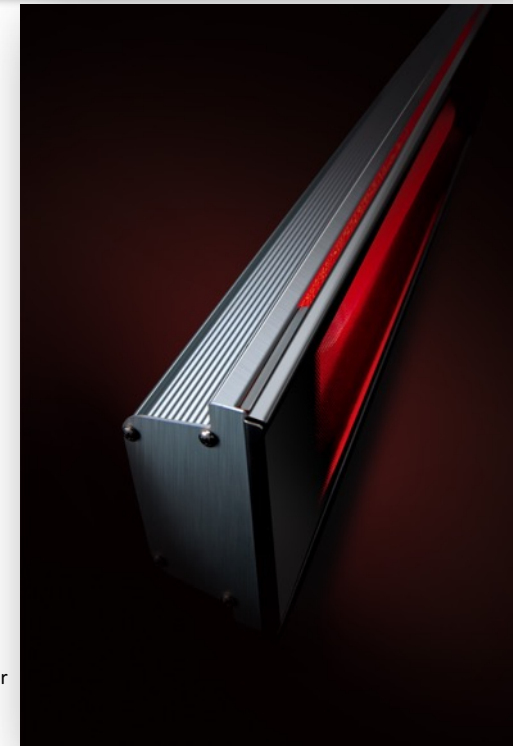


Yandiya's Tinted Glass ceramic screen, spreads comfort across the area while minimizing light emissions. Aesthetically pleasing, elegantly understated to create comfort while blending in with the environment. IP65 protection is suitable for outdoor or indoor use. IR-B mid-wave infrared technology, wind resistant.

Multiple Mounting Options, Wall Ceiling, suspended and recessed Mounting.

Two models with or without Remote Control.

## RUBY CERAMIC INFRARED HEATER



Surface Material	Aluminium/Stainless
Colours	Silver
Surface Temperature	430°C
Voltage	210-230VAC
Cable	2meter
Installation	Outdoor/ Large Indoor
Warranty	2 Years

Sizes	Rated Power	Amps	Coverage
902x170x78	1500watt	7kilos	Manual on/off
902x170x78	1800watt	7kilos	Manual on/off
902x170x78	2200watt	7kilos	Manual on/off
902x170x78	1500watt Remote	7kilos	3 power settings
902x170x78	1800watt Remote	7kilos	3 power settings
902x170x78	2200watt Remote	7kilos	3 power settings

Coverage: 100Watts per Sq. meter





The Yandiya solution to bathroom towel dryer heaters is to offer a stylish rail heaters that dry towels to leave them with a naturally fresh and sun-dried feel.

Low energy consumption heaters are available in 120 watts -160 watt – 320 watt.

Our heated towel rails provide comfort and warmth, complemented by a sleek and elegant design. Its subtle and elegant appearance makes it particularly suitable for bathrooms where it blends easily with any interior. IP65 Rated with simple on/off switch, or can be controlled via thermostat controls.

# INFRARED TOWEL RAILS HEATER



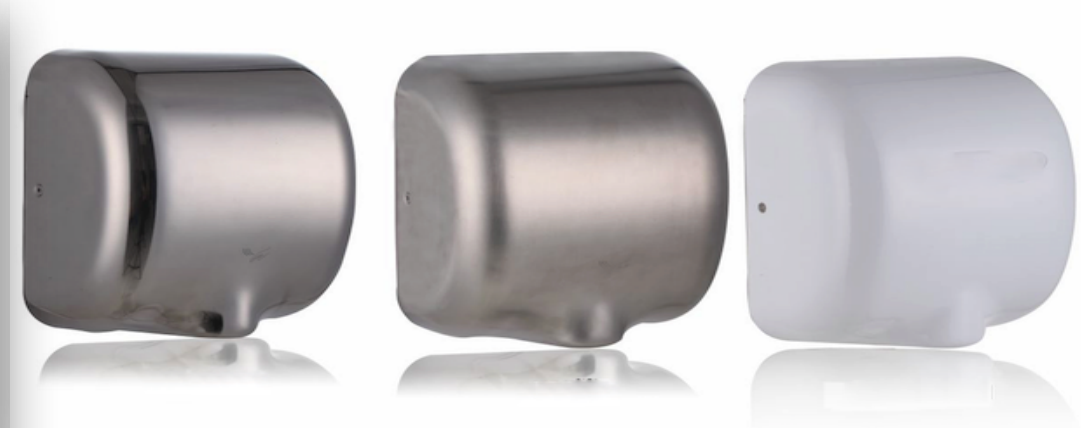
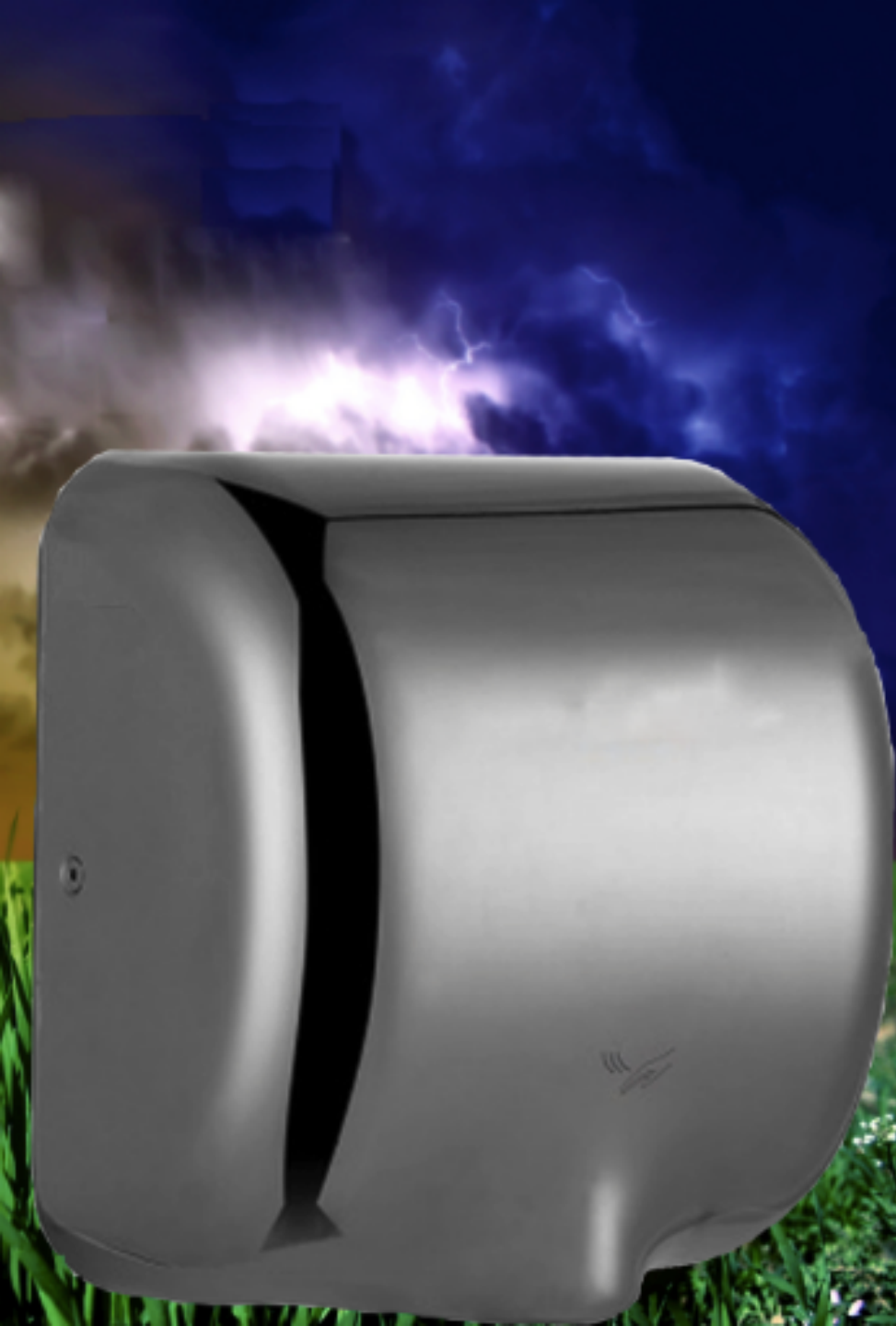
Sizes	Rated Power	Amps	Coverage
505*900*70	120watt	5.6kilos	3.8SqM
505*900*70	160watt	5.6kilos	4.10sqM
505*900*70	320watt	5.6kilos	5.20SqM



Surface Material	Stainless
Colours	Silver
Surface Temperature	45°C
Voltage	210-230VAC
Cable	1meter
Installation	Wall Mounted
Finish	Brushed Stainless
Warranty	2 Years

New Range for 2018





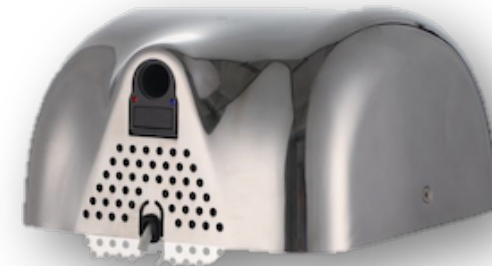
Yandiya's Stainless Steel Storm Hand Dryer 1.2mm #304 stainless steel or 3.0mm Aluminum alloy.

Round outlet makes the airflow more concentrated

Heat system automatic on/off according to the ambient temperature Power and working LED indicator, exclusive design

## STORM INFRARED HAND DRYERS

Surface Material	Aluminium/Stainless
Colours	White/Black/Brushed Polished
Working Temperature	20-40°C
Voltage	110-130V/210-230V
Cable	2meter
Installation	Wall Mounted



Sizes	Rated Power	Motor Power	Material
320*295*170	1400watt	650Watt	304 Stainless steel
Waterproof	Sensing Type	Air Speed	Drying Time
IPX1	Infrared	65m/s or 110m/s	10-15 seconds
Air Temp	Overtime Protection	Sensing Distance	Noise Level
20-40°C	45 seconds	150-200mm	76dB @ 1meter

ErP



RoHS







Dial Non programmable



Hard wired



RF Controller and receiver



Energy Monitoring



Wi-Fi Heat Monitor

## SMART CONTROLS



### Wi-Fi THERMOSTATS



### Control Your Heating.

To get the most from your Yandiya infrared heating panels, you need to be able to control it in real time from anywhere in the world. This can be done via our App on a smart phone or tablet.

### Reduce Energy Costs.

Your energy cost can be reduced by ensuring all Yandiya Infrared Panels are connected to and controlled independently by a state of the art Wi-Fi thermostats control system. Showing you energy or heat monitoring and fully programmable via your Wi-Fi link.

### Simple Controllability..

If a simple control system is required, we have a manual thermostat that can give energy saving for Yandiya Infrared Panels, via manually controlled thermostats.

Our range of control system for Yandiya infrared heating panels, suit all needs from a complete energy monitoring thermostats and heat monitoring thermostat, to simplified manual operated and programmable day settings.

ErP



RoHS





**Yandiya Technologies Ltd  
4 Brunel Way  
Segensworth East  
Fareham  
Hants  
PO15 5TX**

m:+44 (0)7778 404040

t:+44 (0)1329 556575

e:info@yandiyatechnologies.com

w:www.yandiyatechnologies.com

